



# GO WAREHOUSE

TRANSPARENT 3PL  
WAREHOUSING &  
PUBLIC STORAGE

3PL WAREHOUSING &  
FLEXIBLE STORAGE  
SERVICES



786-791-6710 | 3300 NW 110 STREET MIAMI FL 33167



# WHO WE ARE

ACCOUNT(ABILITY) FOR ALL IN 3PL INDUSTRY

THE NURTURING SOUTH FLORIDA AREA HAS ALLOWED US TO FULLY REALIZE & DEVELOP OUR BUSINESS PHILOSOPHY

- DELIVER CUSTOMER DRIVEN RESULTS ACROSS MULTIPLE MODES OF DOMESTIC TRANSPORTATION SERVICES, AT THE HIGHEST LEVEL OF CUSTOMER SATISFACTION, 24-7, WITH NO EXCUSES

SINCE OUR ICEPTION, THE ORGANIZATION MAINTAINS CAPABILITIES TO CONTINUE TO GROW WITH SCALE, FURTHER PASSING UNIQUE ROI-FOCUSED SERVICES TO THE 3PL INDUSTRY

THROUGH STRATEGIC PARTNERSHIPS AND TECH-ENABLED ASSETS GO **FREIGHT** POWERS SPECIALIZED ORGANIZATIONS TO COMPLETE THE ENTIRE 3PL CHAIN. FROM A REGIONAL LOCATION OF MIAMI, FLORIDA, GO **FREIGHT** TAPS INTO MULTIPLE SITES THROUGHOUT THE U.S. TO PROVIDE THE BEST ROI ON YOUR 3PL NEED(S). GO **WAREHOUSE** STEPS IN AS ONE OF THOSE SPECIALIZED POINTS IN ORDER TO PROVIDE INNOVATIVE SOLUTIONS TO SHORT & LONG-TERM 3PL WAREHOUSING AND STORAGE.





# (RANKED) LAE TEAM STRUCTURE

## OUR EMPLOYEES

EACH LOGISTICS  
ACCOUNT EXECUTIVE IS  
RESPONSIBLE FOR  
MANAGING AND  
OVERSEEING THE  
FREIGHT MOVEMENT  
PROCESS THE TENDERING  
OF THE LOAD THROUGH  
DELIVERY.

**24/7** STAFF  
AVAILABILITY

CUSTOMER  
ACCOUNT  
SPECIALIST

...

LOGISTICS  
ACCOUNT  
EXECUTIVE  
TRAINEE (LAET)

...

LOGISTICS SALES  
SUPPORT (NIGHT  
DISPATCH)

⋮

LOGISTICS  
COORDINATOR

⋮

SALES  
ASSISTANT

⋮

TERTIARY  
LEVEL(S) OF  
SUPPORT

LOGISTICS  
ACCOUNT  
EXECUTIVE

⋮

SMART(ER)  
COMMUNICATION  
IS EVERYTHING



\* SCALE BASED  
ON BUSINESS  
NEEDS WITH NO  
EXTRA COST TO  
THE CUSTOMER



# WHAT WE DO

WE ARE THE COMPANY YOU COUNT ON TO FIND THE BEST OPTIONS FOR ALL YOUR STORAGE NEEDS.

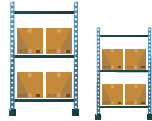
OUR STAFF ARE ABLE TO ADAPT TO CHANGES AS QUICKLY AND EFFECTIVELY AS OUR 3PL SERVICES. BY TRAINING AND ORIENTING STAFF TO MEET SPECIFIC POINTS ALONG 3PL WAREHOUSING AND PUBLIC STORAGE, WE ARE ABLE TO PROVIDE REAL-TIME INSIGHTS AND SERVICES FOR:

- BONDED
- CROSS-DOCK
- COLD STORAGE
- VEHICLE LOADING
- E-COMMERCE FULFILLMENT
- EVENT LOGISTICS BASED STORAGE
- SHORT- & LONG-TERM WAREHOUSING
- TRAVEL-RETAIL READY WAREHOUSING
- DEDICATED HAZMAT & CHEMICAL STORAGE
- THIRD-PARTY LOGISTICS (3PL) CAPABILITIES



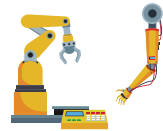


# (ENHANCED) OPERATIONS



## FLEXIBLE FLOOR SPACE & ADJUSTABLE, SECURE RACKS

OUR WAREHOUSING AND STORAGE SITES UTILIZE MODULAR STRUCTURING, ALLOWING US TO PROVIDE CUSTOM OPTIMIZED STORAGE. EACH ITEM IS STORED IN A DEDICATED, SECURE LOCATION, WHICH IS TRACKABLE THROUGH OUR WAREHOUSE MANAGEMENT SYSTEM (WMS) MAGAYA.



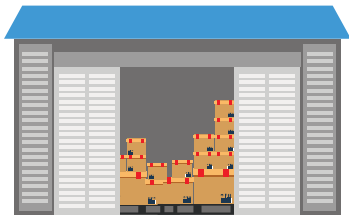
## OPTIMIZED WORKFLOWS & TECH ASSISTED SOLUTIONS

IOT CAPABILITIES, RADIO-FREQUENCY IDENTIFICATION (RFID) DEVICES, GEO-FENCING LOCATIONS- WE BRING INNOVATIVE SOLUTIONS TO ENSURE THE BEST VALUE FOR YOUR CARGO.



## 24/7 SECURE STORAGE FACILITIES

WITH CAMERA-MOBILE CONNECTED TECH, PHYSICAL SECURITY CHECKPOINTS AND REAL-TIME NOTIFICATIONS, OUR CUSTOMER CAN CONFIDENTLY KNOW THEIR CARGO IS SAFE. EACH SITE IS CERTIFIED AND INSPECTED TO ENSURE A HIGH DEGREE OF QUALITY CONTROL.





# (RESPONSIVE) BUSINESS MODEL EXECUTION

1 POINT  
OF  
CONTACT

ETHICAL AND PROFESSIONAL BEHAVIOR IS THE BEDROCK OF OUR COMPANY. WE TREAT ALL OF OUR CUSTOMERS EQUALLY AND POLITELY; THE DEMANDS OF THE INDUSTRY DO NOT DICTATE THE PROFESSIONAL RELATIONSHIPS WE CREATE.

## FLEXIBLE TEAM STRUCTURE

EACH MEMBER OF OUR TEAM IS CROSS-TRAINED WITH A SPECIFIC FOCUS SAFETY AND RESPONSIVENESS. EMPOWERING THEM WITH TECHNOLOGY FOR FASTER AND EASIER WORKFLOWS AND PROVIDING ANNUAL TRAINING SEMINARS. WITH DEDICATED DEPARTMENTS, EMPLOYEES UNDERGO TRAINING RELATED TO THEIR UNIQUE OPERATIONAL NEEDS AS WELL AS GENERAL PRACTICES, ENSURING OUR CLIENTS HAVE A CONSISTENT A-RATED EXPERIENCE ACROSS THE BOARD.

850+  
HOURS OF  
DEDICATED  
3PL TRAINING

100%  
COMPLIANCE &  
TRANSPARENCY

LEARN MORE > [GOWAREHOUSE.IO](https://gowarehouse.io)

# ➔ WHERE WE ARE

## CORE HEADQUARTERS

THE NURTURING SOUTH FLORIDA AREA HAS ALLOWED OUR CAPABILITIES TO GROW WITH SCALE, FURTHER PASSING UNIQUE ROI-FOCUSED SERVICES TO THE 3PL INDUSTRY.

FROM A REGIONAL LOCATION OF MIAMI, FLORIDA, GO **FREIGHT** TAPS INTO MULTIPLE SITES THROUGHOUT THE UNITED STATES. WITH UNIQUE STAFF TRAINED FOR THE UNIQUE ASPECTS OF THE 3PL CHAIN-  
GO **FREIGHT**, GO DRAYAGE,  
GO **HAZMAT** & GO **LTL**.





# RE-INVENTING 3PL WAREHOUSING & STORAGE SERVICES WITH TECH- ENABLED TRANSPARENCY

LEARN MORE > [GOWAREHOUSE.IO](https://gowarehouse.io)





### IOT CAPABILITIES

WE HAVE STRATEGICALLY PLACED EACH ONE OF OUR LOCATIONS TO PROVIDE OPTIMIZED ROUTES- CLOSE TO MAJOR PORTS, HIGHWAYS AND HUBS. CROSS-CONNECTED WITH IOT POWERED DEVICES ALLOWS US TO PROVIDE REAL-TIME UPDATES AND INSIGHTS.



### GEO-FENCED & GEO-TARGETING

BY TAPPING INTO THE POWER OF GPS LIVE TRACKING, WE CREATE A DYNAMIC DIGITAL MAP OF OUR FLEXIBLE WAREHOUSES. THIS ALLOWS US TO PROVIDE FURTHER SUBSETS OF DIGITAL TOOLS AND SECURE ACCESSING. WITH ACTIVE TRIGGERS IN PLACE, OUR CERTIFIED TEAM OF EMPLOYEES CAN PASS YOU INSIGHTS TO FURTHER PROVIDE ROI-BASED SERVICES.



### MAGAYA (WMS) SYSTEM

MAGAYA (WMS) WAS DESIGNED FROM THE GROUND UP TO MANAGE WAREHOUSING & STORAGE SITES EFFECTIVELY. GO **WAREHOUSE** EMPOWERS THE SYSTEM WITH ADDITIONAL TECHNOLOGY TO SUPPLEMENT OUR ECO-FRIENDLY AND COST-EFFECTIVE OPERATIONS.



### REAL-TIME UPDATES

EACH STORAGE SITE IS CROSS-CONNECTED WITH A NUMBER OF ADDITIONAL TECHNOLOGY, ALLOWING US TO PROVIDE ON-DEMAND SERVICE. FROM QUOTING, SERVICES, SPECIFIC QUESTIONS, FLOOR PLANS- WE CAN PASS THE INFORMATION YOU NEED TO MAKE A ROI BASED DECISION.



## (TECH) ENHANCED OPERATIONS



# PROOF OF BUSINESS MODEL

## CUSTOMER TESTIMONIALS

"My 3PL focused transportation company has been using Go Warehouse for the last several months and it has consistently been a successful B2B relationship. Working with dedicated account executives allows me to communicate quickly with specific attention to my business." – Anonymous Customer Survey

"Pedro and his warehouse team are truly dedicated. As a freight forwarder, I go in and out of a ton of storage spaces with none as clean and as organized as Go Warehouse's." – Jacob, email response.

"Receiving updates about my cargo- when it arrives and when it ships- brings so much confidence in my storage outsourcing. Go Warehouse allows me to focus on other parts of my business without my being concerned about micro-managing" – Anonymous Customer Email

## CARRIER TESTIMONIALS

"Since we started this business, we have been able to count on Go Warehouse for access to storage across the United States. Seeing the technology is one thing, but having it decrease your overall operations costs is amazing. The added cross security is comforting as well. Thank you for your support." Bing Review

"Assisting me with both my shipping and storage needs, Nam provided me with insightful suggestions allowing me to invest my limited time on other matters; working with them takes so much pressure off my operational team. You guys are the best." Google Review





# (CERTIFIED) 3PL NETWORK

## STRATEGIC 3PL PARTNERS & ORGANIZATIONS

BLUE BOOK

4 LICENCIES:

MC, DOT, & TSA APPROVED  
UIC SCAC CODE & FMCSA  
VALIDATED

DUN & BRADSTREET

5A2  
DUNS # 79-145-9410



# LET'S TALK



EMAIL

**INFO@GOWHSEHUB.IO**

TELEPHONE

**786-791-6710**

ADDRESS

**3300 NW 110 STREET  
MIAMI FL 33167**

